



KONICA MINOLTA

bizhub C658/C558/C458

A3



C658 **65** CL PPM **65** BW PPM

C558 **55** CL PPM **55** BW PPM

C458 **45** CL PPM **45** BW PPM

Giving Shape to Ideas

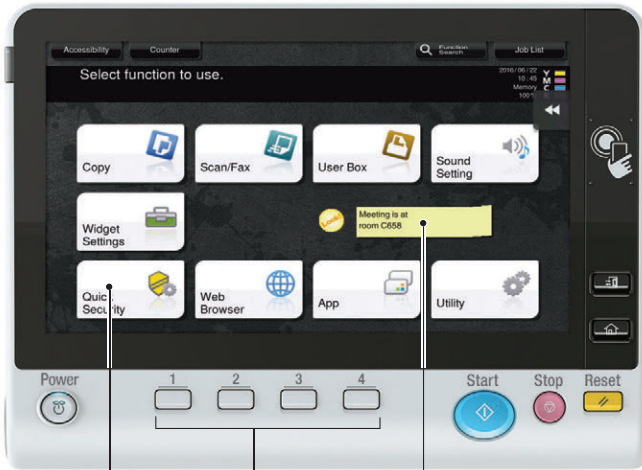
Have your potential ready for being smarter



More flexibility to your workflow

Easy-to-see, easy-to-use 10.1 inch panel

The large 10.1 inch panel ensures quick and easy operation. The interface helps to reduce operational errors, this user-friendly panel enhances everyday work.



Top Menu
Customisable to match applications.

Hard registration keys
Register up to 4 commonly used function.

Widget Function
Enables transmission of messages using the operation panel.

Product design

The bizhub C658 series adopts the easy and intuitive INFO-Palette design. Its unified user interface provides a consistent user experience in any business situation across a multitude of devices such as PCs, tablets and smartphones.



Faster scanning speed and precise outputs create smooth workflow

The ADF features a 300-sheet paper holding capacity and impressive duplex 240 opm (120 sheets for double-sided) scan speed. Its high productivity supports business efficiency and speed, while its instant scanning and copying meet customers' high-volume needs.

An error message appears when double feeding is detected*2. The scanned document can be previewed on the screen to determine where scanning should be resumed.

*2 Optional Double feed detection Kit UK-501 is required.



- Max. 300 sheets**
- Simplex 120 opm**
- Duplex 240 opm**

Standard web browser

The multi-touch UI in the operation panel can be used to display and print out web page content. It is convenient for printing pages from PDF files that can be viewed on websites, or for printing maps of places you are about to visit.

Optional paper feed output options

The standard paper capacity of the MFP is 1,150 sheets. With the optional paper feed options, the paper capacity can be increased up to 3,650 sheets. The optional Large Capacity Unit will bring the maximum to 6,650*1 sheets to reduce overall MFP downtime caused by paper replenishment.

*1 When optional Paper Feed Cabinet PC-415 and Large Capacity Unit LU-302 are mounted.

Multiple Bypass Tray (standard)
Max. SRA3
150 sheets

Standard
1,150 sheets

Max.
6,650 sheets

PC-115 (optional)
Max. A3 / 500 sheets
Total 1,650 sheets

PC-215 (optional)
Max. A3 / 500 sheets x 2
Total 2,150 sheets

PC-415 (optional)
Max. A4 / 2,500 sheets
Total 3,650 sheets

LU-302 (optional)
Max. A4
3,000 sheets

Universal tray (standard)
Max. A3
500 sheets

Universal tray (standard)
Max. SRA3
500 sheets

Select One

* The paper supply capacity for all models is based on 80 g/m².

All-in-one compact finisher enables diverse output

The FS-537 finisher houses all output options within a body less than 1,400mm wide to meet diverse output requirements while simplifying installation and deployment.

Even jam occurs in the finisher, purge function automatically eject the jammed paper to the inner output tray.

Z-fold Unit [ZU-609]

Post Insertor [PI-507]

Punch Kit [PK-523]

Saddle stitch

Finisher [FS-537SD]

1,396mm

Flexible connectivity supports diverse work styles

Connect with Android devices

The new Mobile Touch Area on the operation panel is ready to support NFC (Near Field Communication) connection with Android*¹ devices. Touch the area with your Android device to perform pairing through PageScope Mobile (PSM). Select files in PSM, then touch the device to the operation panel to print*². Or simply touch the device to the operation panel to scan*².



- *1 NFC connection requires Android OS 4.4 or higher to be installed.
- *2 A wireless LAN environment is required to perform touch to print and scan.

Connect with iOS devices







iOS devices can search for and register a nearby MFP in PageScope Mobile (PSM)*³ via Bluetooth LE (BLE)*⁴ technology. Additionally, iOS devices can be used to log into the MFP via BLE connection. Select files in PSM to print*⁵ directly from iOS devices or scan*⁵ files directly to the iOS devices.

- *3 PageScope Mobile for iPhone/iPad version 5.0 or higher is required.
- *4 Optional Device Connection I/F Kit EK-609 is required.
- *5 Wireless LAN environment is required to perform print and scan.

Document digitalisation

Paper documents can be scanned and converted into PDF and OOXML (pptx, docx, xlsx) file formats. Choose a file format suitable for the work objective. To widen the potential of documents for secondary usage. Although pptx conversion is a standard function of this machine, optional i-Option LK-105 v4 or LK-110 v2 are required to use OCR.

Connect instantly without print drivers to industry standard mobile technologies

	iOS	Android	Windows 10 Mobile
 AirPrint iOS and Mac OS X standard printing technology.	✓		
 Mopria Print Service Multi-vendor-compatible application supplied by Mopria Alliance.		✓	
 Google Cloud Print Enable printing via Cloud from Google Cloud Print supported application. * Google Cloud Print Setup and Google account registration are required.	✓	✓	
 Konica Minolta Print Service Application that enables mobile printing from bizhub.		✓	
 PageScope Mobile Mobile application supplied by Konica Minolta that enable a wide range of bizhub functions including print, scan, staple and punch.	✓	✓	✓
 Printouts from received emails A file attached to an email can be printed out. * Optional i-Option LK-110 v2 is required.	✓	✓	✓

Advanced security technology protects important information

Authentication on the MFP main unit

Authentication can be performed directly on the main unit. Detailed access control can be set up for each function, including copy, print, scan and fax*¹.

- *1 Optional Fax Kit FK-514 is required.

IC card authentication

Authentication is possible*² with various types of IC card*³, including cards that comply with the SSFC (Shared Security Formats Cooperation) standard. Besides the IC card, authentication can also be performed with any Android device*⁴ equipped with an NFC antenna.



- *2 Optional Authentication Unit AU-201S is required.
- *3 Compliant non-contact IC cards include FeliCa (IDm), SSFC, FCF, FCF (campus), FeliCa Private, and MIFARE (UID).
- *4 Requires Android 4.4 or later that supports HCE (Host Card Emulation) or PageScope Mobile for Android v4.1 or later.

Biometric authentication

Your finger veins become the most accurate authentication tool. Biometric authentication is easy to implement, but offers very high-level security.



- * Optional Biometric Authentication Unit AU-102 and Working Table WT-506 are required.

Server-less pull printing

Print jobs sent by users can be printed from any MFP in the office print group. This allows users to build a server-less pull printing system more easily and at low initial cost.

- * A pull printing system consisting of a maximum of 10 MFPs can be created. All corresponding MFPs must be in the same network.
- * Optional i-Option LK-114 is required to be installed in each MFP.

HDD mirroring

Supports "Mirroring", which synchronises main HDD data and backup HDD data in real time. In the event of main HDD failure, operation automatically switches to the backup HDD to drastically reduce the risk of data loss.

- * Optional HDD Mirroring Kit HD -524 is required.

TPM (Trusted Platform Module)

Control confidential information with a TPM (Trusted Platform Module) security chip that encrypts and decrypts confidential data. Encrypted confidential information is stored in a dedicated storage area in the chip to prevent unauthorised reading from external devices.

- * Optional i-Option LK-115 v2 is required.

High-precision, smarter operation

Emperon printing system

Konica Minolta's proprietary Emperon unified printing system is standard embedded with network printing functions. It provides a comfortable printing experience in any office network environment regardless of OS used.



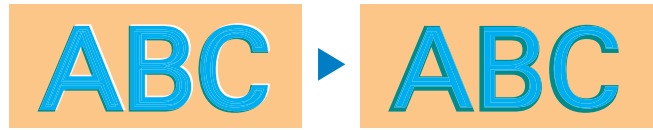
Fiery controller

Optional Fiery Image Controller*1 for graphics applications can produce a professional, high-level print quality environment. The controller's various settings can be configured by using the MFP web browser.

*1 Optional Fiery Image Controller IC-416 and Video Interface Kit VI-510 are required.

Auto Trapping

This feature is to eliminate gaps between text and background by overprinting where two or more colours meet. Both PS and PCL print driver can be used. Texts become more legible.



Auto Trapping OFF

Auto Trapping ON

Efficient use of electric power and recycled materials, additional value of TCO (total cost of ownership) reduction

Usage of recycled materials

Konica Minolta has made further advances in its unique chemical processing technology. It has also increased its use of recycled PC/PET with a higher PCR ratio*1 of approximately 70%. What is more, our use of recycled ABS resin has increased the PCR ratio for internal materials to approximately 95%. This recycled material accounts for more than 35% of the total weight of resin in the main unit and covers approximately 88% of the outer surface area of the machine.

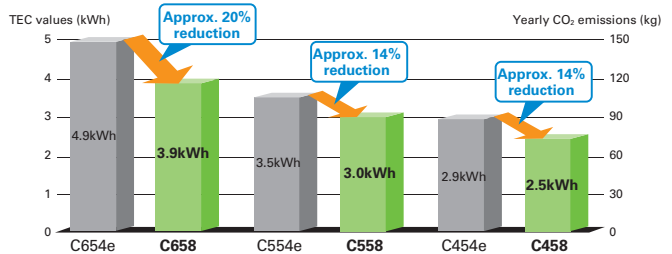
*1 PCR (post-consumer recycling): the ratio of municipally recycled materials used in the recycled materials.



Top-class power consumption and class-leading TEC value

The MFP CPU turns off in sleep mode to deliver a top-class 0.5W power consumption ratio. The TEC value has also been reduced approximately 14-20%, which helps reduce CO₂ emissions.

Comparison of TEC values (in Europe and other regions) of previous models (bizhub C654e/C554e/C454e) and the bizhub C658 series.



* Values for 220-230 V

* TEC values applied to the International Energy Star Program Version 2.0

Yearly CO₂ emissions:

TEC value x 52 weeks x emission factor

(From the November, 2011 press release by Japan's Ministry of the Environment.)



Model shown is C658 with options.

bizhub C658/C558/C458

C658 Colour B&W 65/65 ppm	C558 Colour B&W 55/55 ppm	C458 Colour B&W 45/45 ppm	Resolution 1,200 dpi	SRA3	Dual Scan ADF 240 opm Duplex	Dual Scan ADF 120 opm Simplex	Biometric Authentication *1	IC-Card Authentication *1
	USB Print	Colour Internet Fax	Fax	Mobile Support *1	Bioplastic	Recycled PC/PET		

*1 Optional

For more information please visit the bizhub Web site at

www.konicaminolta.com/me

Product appearance, configuration and/or specifications are subject to change without notice. This product is not available for some countries or regions.

KONICA MINOLTA, the KONICA MINOLTA logo, symbol mark, Giving Shape to Ideas, bizhub, INFO-Palette, PageScope, PageScope logo, Emperon Driven, i-Option, Simitri, Konica Minolta Optimised Print Services and their respective logos are registered trademarks or trademarks of KONICA MINOLTA, INC. Google, Android and Google Cloud Print are registered trademarks or trademarks of Google Inc. in the U.S. and other countries. Mac OS, AirPrint and AirPrint logo are registered trademarks or trademarks of Apple Inc. in the U.S. and other countries. iOS is a trademark or registered trademark of Cisco in the U.S. and other countries. Bluetooth is a registered trademark or trademark of Bluetooth SIG, Inc. Microsoft, windows, PowerPoint and Excel are registered trademarks or trademarks of Microsoft Corporation in the U.S. and other countries. Mopria is a registered trademark or trademark of Mopria Alliance Inc. Felicia is a registered trademark or trademark of Sony Corporation. NFC is a registered trademark or trademark of the NFC Forum. SSFC is a registered trademark or trademark of Dai Nippon Printing Co. Ltd. FCF is a registered trademark or trademark of the FCF Promotion Forum. MIFARE is a registered trademark or trademark of NXP B.V. Fiery is a registered trademark or trademark of Electronics For Imaging, Inc. All other brands and product names are registered trademarks or trademarks of their respective companies or organisations.

Presence in the region

Dubai. Kingdom of Saudi Arabia. Kingdom of Bahrain. Kuwait. Qatar. Sultanate of Oman. Pakistan. Republic of Yemen

Konica Minolta Business Solutions Middle East FZE
P.O. Box 261369, Jebel Ali Free Zone, Dubai, United Arab Emirates
Telephone No +971 4 880 8388

Ecology & Environment

KONICA MINOLTA products are designed with the environment in mind.

- Energy Star
- RoHS Compliance
- WEEE Compliance
- Eco-friendly Toners
- Production at ISO Certified Factories



From consulting, system design, to operations, Konica Minolta offers total support to optimise your office output environment.

<http://www.biz.konicaminolta.com/services/ops>

Requirements for safe use

- Please read and follow the instruction manual to ensure safe operation.
- Only operate using appropriate power supply and voltage.
- Connecting the earth wire to an inappropriate place may cause explosion or electric shock. Please connect accordingly (Taiwan and the Philippines only).

