

# High Performance

Speed and quality contribute to improved office performance



<b>C3851</b>	<b>38<sup>CL</sup> PPM</b>	<b>38<sup>BW</sup> PPM</b>
<b>C3351</b>	<b>33<sup>CL</sup> PPM</b>	<b>33<sup>BW</sup> PPM</b>
<b>Resolution</b>	<b>1,200 dpi</b>	
<b>Maximum paper capacity</b>	<b>1,650<sup>+</sup> sheets (80g/m<sup>2</sup>)</b>	

\* When the two optional 500-sheet paper units are added.

## High-speed printing

Delivers high-speed printing at 38 PPM\*\*/33 PPM\*\* in both colour and black-and-white modes (A4 portrait). Fast output even when printing a large number of copies.

\*\* C3851FS and C3351  
\*\* C3351

## Reduced warm-up and first copy time

The wait time for a single copy job has been significantly reduced to help speed up operations. Warm-up time (23°C at rated voltage): 20 sec or less

First copy time	CL	BW
C3851	7.1 sec max	6.2 sec max
C3351	9.1 sec max	8.1 sec max

## Enhanced colour quality

The 1,200 dpi printing mode improves the reproducibility of even small fonts and thin lines. It also allows line thickness to be reduced, so intricate details can be accurately reproduced.



## Compact design

With its compact design (width: 555 mm; depth: 584 mm), the bizhub C3851FS series can fit in small spaces like the backroom of a store, beside a desk in a SOHO environment, or in the corner of a partitioned work space in a large office. In addition, using a wireless kit\*\* makes it possible to connect to an office Wi-Fi network, further expanding the range of possible places for installation.

\*\* Upgrade Kit LK-216, the Local Interface Kit EK-P05 or Local Interface Kit EK-P06

## 1,650 sheets

Equipped with a 650-sheet large-capacity paper unit as standard. The use of optional paper units can increase the capacity to a total of 1,650 sheets\*\*.

\*\* 80 g/m<sup>2</sup>

## i-Option expands range of functions

Paper documents are scanned to PDF or OOXML. As the file format that is best suited to the operation or objective can be selected, i-Option expands the range of secondary uses for documents.

- The OCR feature makes it possible to conduct full-text searches.
- Images and text can be re-used in Microsoft Office and other applications.

File conversion formats and required options (i-Option)

	LK-102v3	LK-105v4	LK-110v2
PDF/A (long-term archiving)	○	○	○
Web-optimised PDF (linearised PDF)	○	○	○
Encrypted PDF (digital ID)	○	○	○
Searchable PDF (OCR)	○	○	○
Compact, high-resolution PDF	○**	○	○
OOXML file (extension: .docx/.xlsx/.pptx) conversion			○
OOXML file (extension: .docx/.xlsx/.pptx) conversion + OCR		○**	○

\*\* The pptx conversion function comes as standard, but LK-105 v4 or LK-110 v2 is required for the OCR function.  
\*\* Support pptx files only.  
\* To use the above options, the optional Upgrade Kit LK-211 is required.

# Usability

Simple and intuitive, offering excellent usability for all users

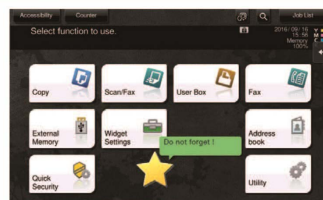
## INFO-Palette design

The bizhub C3851 series comes with the intuitive user-friendly INFO-Palette design. Its integrated user interface provides consistent user experience in any business situation across multiple devices, including PCs, tablets, and smartphones.



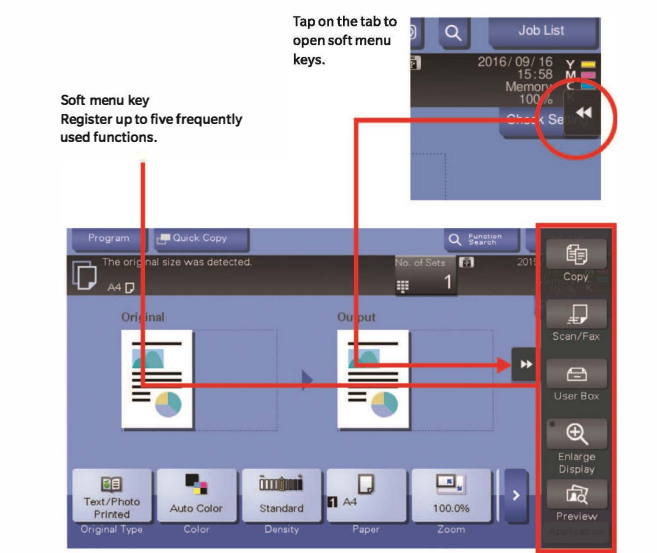
## Widget feature

Built-in widget function enables textboxes, icons, and GIF animation to be posted onto the operation panel. Use this function just like sticky notes to share such information as operating precautions, operating rules, and in-house messages.



## Slide menu

In addition to the four hard registration keys, five soft menu keys are also available for one-touch activation of functions. Assign frequently used functions (e.g. copy, fax, open numeric keypad) to these keys for improved operability.



## Colour inversion

Invert display colours of enlarged display screen for a screen view with enhanced colour contrast.



## Large 7-inch operation panel

The operation panel's intuitive design allows users to operate with just the swipe of a finger. Has the same user interface as A3 multifunction printers and therefore is easy to use.



The soft numeric keypad has been revised to enable faster input.

## Connecting to mobile devices

Connecting to NFC-enabled Android devices

The operation panel is equipped with the Mobile Touch Area, which is compatible with devices that support Near Field Communication (NFC). Pairing\*\* is available from Android devices via PageScope Mobile. Print a file by selecting it in PageScope Mobile and holding the Android device over the Mobile Touch Area. Scan\*\* documents to save data. If authentication is required, the user can log in by holding an Android device over the Mobile Touch Area.

\*\* Android devices must have Android OS 4.0 or higher.  
\*\* A wireless LAN environment is required.



## Connecting to iOS devices via Bluetooth LE

Users can search for and register\*\* nearby bizhub units in PageScope Mobile\*\* via Bluetooth Low Energy (LE)\*\* technology. If user authentication is required, log in using Bluetooth LE. Easily print\*\* or scan\*\* via wireless LAN by selecting a bizhub unit that is registered in PageScope Mobile.

\*\* A wireless LAN environment is required.  
\*\* PageScope Mobile for iPhone/iPad Version 5.0 or higher is required.  
\*\* The optional Local Kit EK-P06 is required.

# Network

Diverse connectivity promotes efficient workflow

## Mobile printing

AirPrint  
Apple's standard printing system compatible with iOS 4.2 and Mac OS 10.7 or later. A compatible printer on your wireless LAN can be used.  
\* Coming soon.



## Mopria Print Service

Wireless printing technology provided by Mopria Alliance. Allows you to print from devices installed with Android 4.4 or later.



## Google Cloud Print

With the compatible software installed, you can print from any locations via the internet regardless OS or device types.  
\* Google Cloud Print Setup and Google account registration are required.



## Konica Minolta Print Service

Print directly to bizhub via a wireless LAN from Android 4.4 or later installed devices.



## PageScope Mobile for iPhone/iPad and Android

Using PageScope Mobile, an app offered by Konica Minolta, access a wide range of bizhub functions including double-sided printing, 2-in-1 printing, security printing, and staple/punch printing.



## PageScope Mobile for Windows

Print documents on a bizhub unit from mobile devices equipped with Windows 10 Mobile.



## bizhub Remote Access

Installing bizhub Remote Access\*\* to operate remotely from a mobile device as if using the bizhub unit's operation panel. Enable various settings (e.g. configure sleep mode settings, register abbreviated addresses, manage document files stored in boxes, and configure MFP settings) from a remote location in the office.

\*\* Download Android version from Google Play, and iOS version from the App Store (free of charge).  
\*\* MFP operation panel cannot be used when bizhub Remote Access is in use.  
\*\* The device used for remote operation must be connected to the same network as MFP.

## Wireless LAN

With the simple AP (Access Point) mode,\*\* a single bizhub C3851FS series unit can set up a local wireless LAN environment by itself, enabling external mobile devices to get a secure connection without the need for an internal LAN. For greater convenience, use PageScope Mobile\*\* to read the QR code displayed on the operation panel to establish a wireless connection between a mobile device and the bizhub unit.

\*\* The optional Upgrade Kit UK-216 and Local Connection Kit EK-P05 or EK-P06 are required.  
\*\* PageScope Mobile for iPhone/iPad and Android



\* In simple AP (access point) mode, up to four devices can be connected simultaneously.

## bizhub Connector

Use the bizhub Connector to upload scanned documents and directly print. Access cloud services\*\* or SharePoint Enterprise Server 2007, 2010, 2013 or 2016 from the bizhub unit's operation panel. Once a user logs into the bizhub unit and then enters and saves authentication information to access the cloud or other services, the user can log in in silent mode, and log in automatically thereafter.

## bizhub Connector\*\* is available in three applications:

bizhub Connector S-1 for Microsoft SharePoint	bizhub Connector G-1 for Google Apps	bizhub Connector E-1 Works with Evernote
---	--------------------------------------	--

\*\* Google Drive, Gmail, and Evernote  
\*\* Separate setup fees required

## Web browser

Print the desired portions of PDF files or maps viewed on websites.



# Security

High-level security to address risks in multiple ways

## Various authentication capabilities

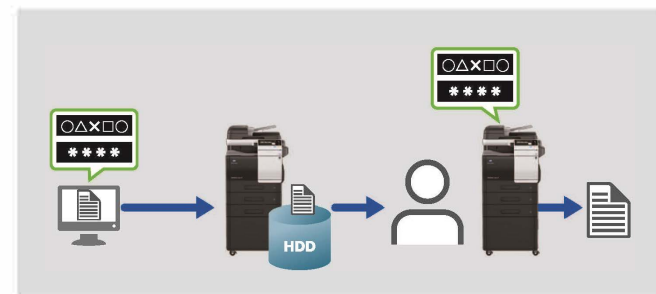
A built-in authentication system can be found on the operation panel, allowing the administrator to set restrictions on copying, scanning, faxing\*\*, printing, using external memory, and using Box functions for each user and department. It also supports user authentication\*\* with contactless IC cards,\*\* biometric authentication\*\* using the user's finger vein in patterns, and authentication on NFC-enabled Android devices\*\*.

\* Optional Fax Kit FK-S17 is required.  
\*\* Device Connection I/F Kit EK-P05 or EK-P06 required in addition to optional IC Card Authentication Unit AU-2015 and Mounting Kit MK-P02.  
\*\* Supports contactless IC cards include FelCa (IDm), SSFC, FCF, FCF (campus), and MIFARE (UID).  
\*\* Android device that runs Android OS 4.4 or higher and supports Host Card Emulation (HCE), and PageScope Mobile for Android Version 4.1 or higher are required.



## Secure printing

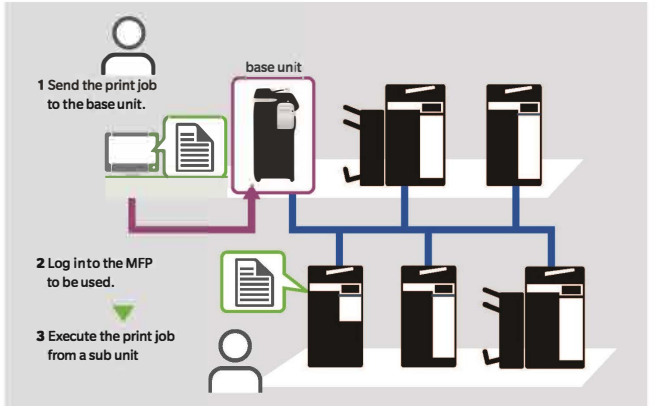
When printing, set up a password on the printer driver screen to store print data in the bizhub unit's hard disk. It will not print unless authenticated by entering the same password on the operation panel. A useful function for printing confidential documents or for restricting receivers of the document.



## Server-less pull printing

After authentication, print jobs can be printed on any bizhub unit connected in the office network group. A single bizhub C3851FS series unit replaces the print server as the base unit for pull printing, so it allows users to easily build a server-less pull printing system at a lower introductory cost.

\* Can establish server-less pull printing consisting of up to 10 MFPs. All other compatible bizhub series units must be in the same network.  
\* Optional i-Option LK-114 is required for each of the other bizhub series units.  
\* Optional Upgrade Kit LK-211 is required.



## Fax security

Equipped with security functions, the bizhub C3851FS series helps prevent incorrect fax number input or selection of wrong recipient.

Recipient's number displayed for confirmation  
Press the Start button on the fax to display the recipient's name on the operation panel. Confirm that the correct fax recipient is selected.

Enter recipient's number twice  
When entering the fax number directly, the user is required to enter the recipient fax number twice before transmission.

Third-party authentication function  
A fax is sent only after someone other than the sender confirms the destination and enters the transmission authorisation password.

\* Optional FAX required if the unit is not equipped with FAX.

## TPM

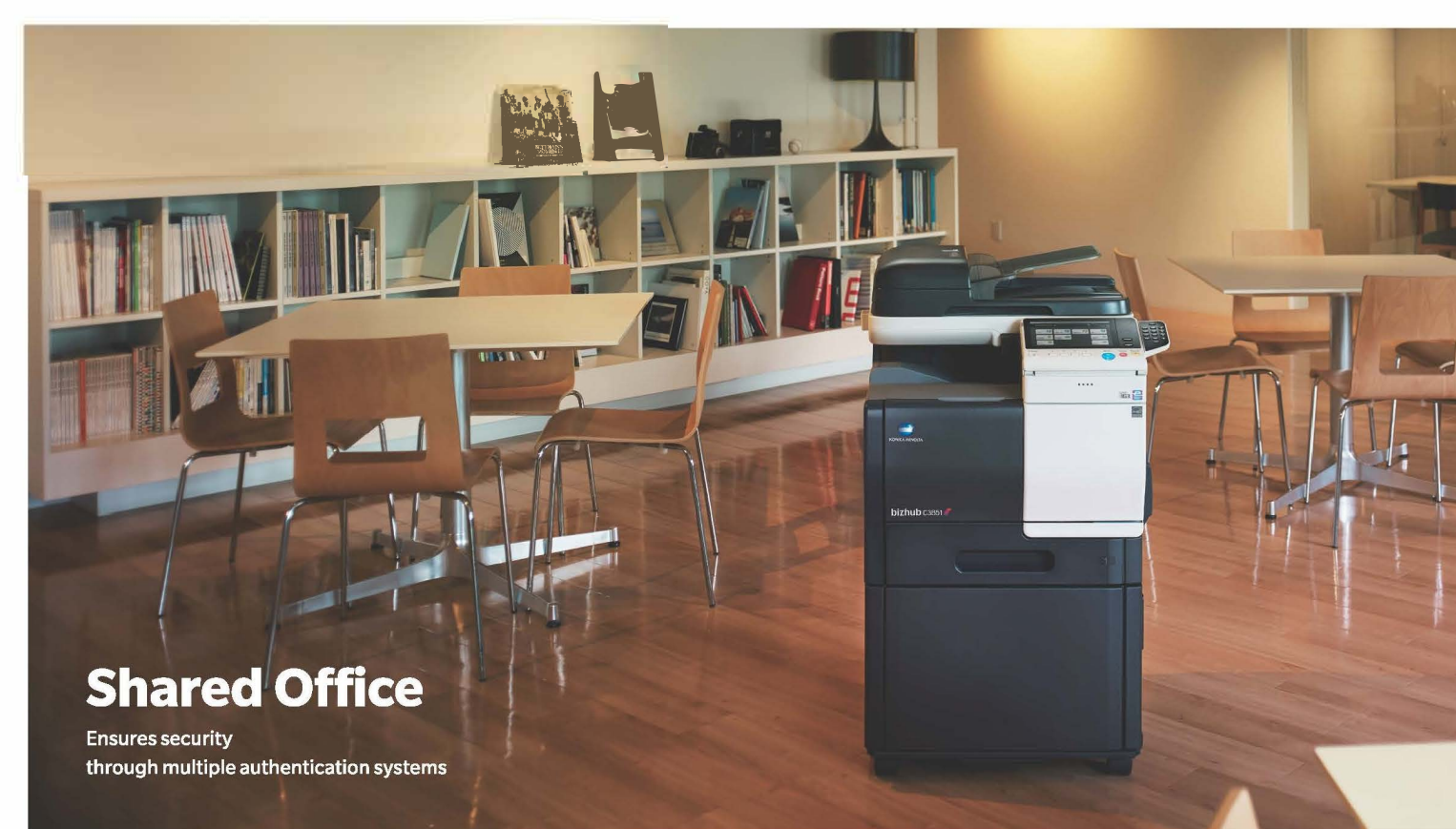
Trusted Platform Module (TPM): a security chip that encrypts/decrypts data for secure management of sensitive information (e.g. MFP digital certificates and passwords). The TPM key for encrypting sensitive information is saved in a dedicated storage area in the TPM chip. The information is secure, as the storage area cannot be accessed externally.

\* The optional i-Option LK-115v2 is required.

## ISO/IEC 15408 certification

bizhub C3851FS series is to be certified as being compliant with the international security standard ISO/IEC 15408 as it has met the rigorous security requirements of US Government Approved Protection Profiles.





**Shared Office**  
Ensures security through multiple authentication systems



**SOHO**  
Smooth connectivity with mobile devices makes for easy and efficient use



## Ecology

An energy-efficient, resource-saving design

### Improved light resistance

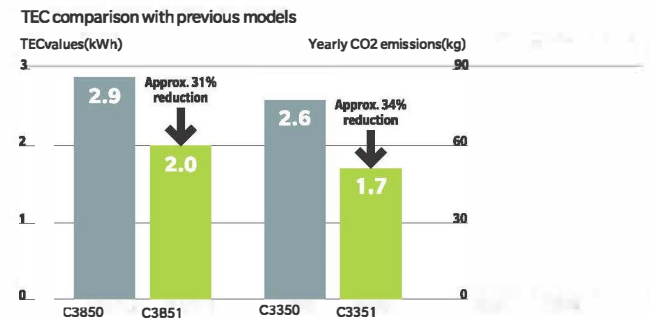
Newly developed toners with improved light resistance produce documents with improved print quality suitable for long-term storage.



Original Image    Light-resistant toner    Conventional toner

### TEC values

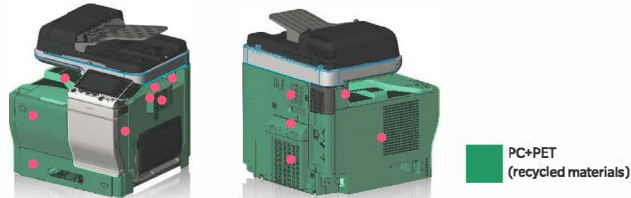
With its energy-efficient design, the bizhub C3851 series easily clears the standard energy consumption (TEC) values defined in International Energy Star Program Version 2.0. Compared with previous models, its TEC has decreased by approximately 31%-34%, while its CO<sub>2</sub> emissions have also dropped.



\* Values for 220-230V  
\* TEC values applied to the International Energy Star Program Version 2.0  
Annual CO<sub>2</sub> emissions = TEC value x 52 weeks x emission factor  
(From the November, 2011 press release by Japan's Ministry of the Environment.)

### Usage of recycled materials

To reduce our environmental burden, we use recycled PC/PET which we developed with our proprietary cutting-edge chemical processing technology. Of the surface area of the bizhub C3851 series, 47.7% is made using recycled PC/PET. The registration keys in the operation panel are made with recycled bio-plastic materials.



PC/PET (recycled materials)

### Power consumption

We have improved bizhub units' power-saving logic (e.g. turning off MFP's CPU during sleep mode) and successfully cut power usage during sleep mode to 0.5 W, contributing to reducing the environmental impact and the total cost of ownership (TCO).

### Global environmental standards

We address global environmental issues by ensuring our products' compliance with the requirements of the International Energy Star Program, which aims to develop and introduce energy-efficient office appliances. Our products also comply with the environmental standards adopted by countries with high environmental awareness. We are committed to work from a broad range of perspectives to reduce our environmental impact.



## bizhub c3851/c3351

Copy	Print	Scan	Fax	Resolution 1,200 dpi	Legal	Dual Scan 35 ipm
USB Print	USB Scan	Mobile Support	Linux Support	Biometric Authentication	iCard Authentication	Bio-plastic
				Recycled PC/PET	RoHS Compliance	WEEE Compliance
				Production at ISO Certified Factories		

\*1 Option in some regions \*2 Optional

[http://www.biz.konicaminolta.com/colour/c3851fs\\_c3851\\_c3351/](http://www.biz.konicaminolta.com/colour/c3851fs_c3851_c3351/)

Product appearance, configuration and/or specifications are subject to change without notice.  
This product is not available for some countries or regions.  
KONICA MINOLTA, the KONICA MINOLTA logo, symbol mark, Giving Shape to Ideas, bizhub, PageScope, Emperson, INFO-Palette, SimiTri, i-Option and Konica Minolta Optimised Print Services and their respective logos are registered trademarks or trademarks of KONICA MINOLTA, INC. Evernote is a registered trademark or trademark of Evernote Corporation. Google, Android, Google Apps, Google Drive, Gmail, Google Play and Google Cloud Print are registered trademarks or trademarks of Google Inc. in the U.S. and other countries. SharePoint is a registered trademark or trademark of Microsoft Corporation in the U.S. and other countries. Mac OS, iPhone, iPad, App Store and AirPrint are registered trademarks or trademarks of Apple Inc. in the U.S. and other countries. iOS is a registered trademark or trademark of Cisco in the U.S. and other countries. Bluetooth is a registered trademark or trademark of Bluetooth SIG, Inc. Mopria is a registered trademark or trademark of Mopria Alliance Inc. NFC is a registered trademark or trademark of the NFC Forum. Felica is a registered trademark or trademark of Sony Corporation. SSF is a registered trademark or trademark of Dai Nippon Printing Co., Ltd. MIFARE is a registered trademark or trademark of NXP B.V. All other brands and product names are registered trademarks or trademarks of their respective companies or organizations.



From consulting, system design, to operations, Konica Minolta offers total support to optimise your office or print environment.

<http://www.biz.konicaminolta.com/services/ops>

### Requirements for safe use

- Please read and follow the instruction manual to ensure safe operation.
- Only operate using appropriate power supply and voltage.
- Connecting the earth wire to an inappropriate place may cause explosion or electric shock. Please connect accordingly (Taiwan and the Philippines only).

Konica Minolta Business Solutions Middle East FZE  
P.O. Box 261369 Jebel Ali Freezone  
Dubai, United Arab Emirates  
Telephone +971 4 880 8388

9251-3247-01 Printed in Japan



**bizhub**  
C3851/C3351

A4



C3851 38 CL PPM 38 BW PPM  
C3351 33 CL PPM 33 BW PPM

Giving Shape to Ideas



**Large Office**  
Highly compatible with A3 printers  
Ideal for use as a secondary printer in large offices



**Shop**  
Compact size can fit into any space  
Print flyers with clean and detailed visuals

World-class colour A4 multifunction printers  
Help create value in any office

**bizhub**  
C3851/C3351